



Ontario Politics *Ontario This Month*

Public Opinion Research
Field Dates: May 17 to 27, 2022
Release Date: June 1, 2022

Provincial Vote

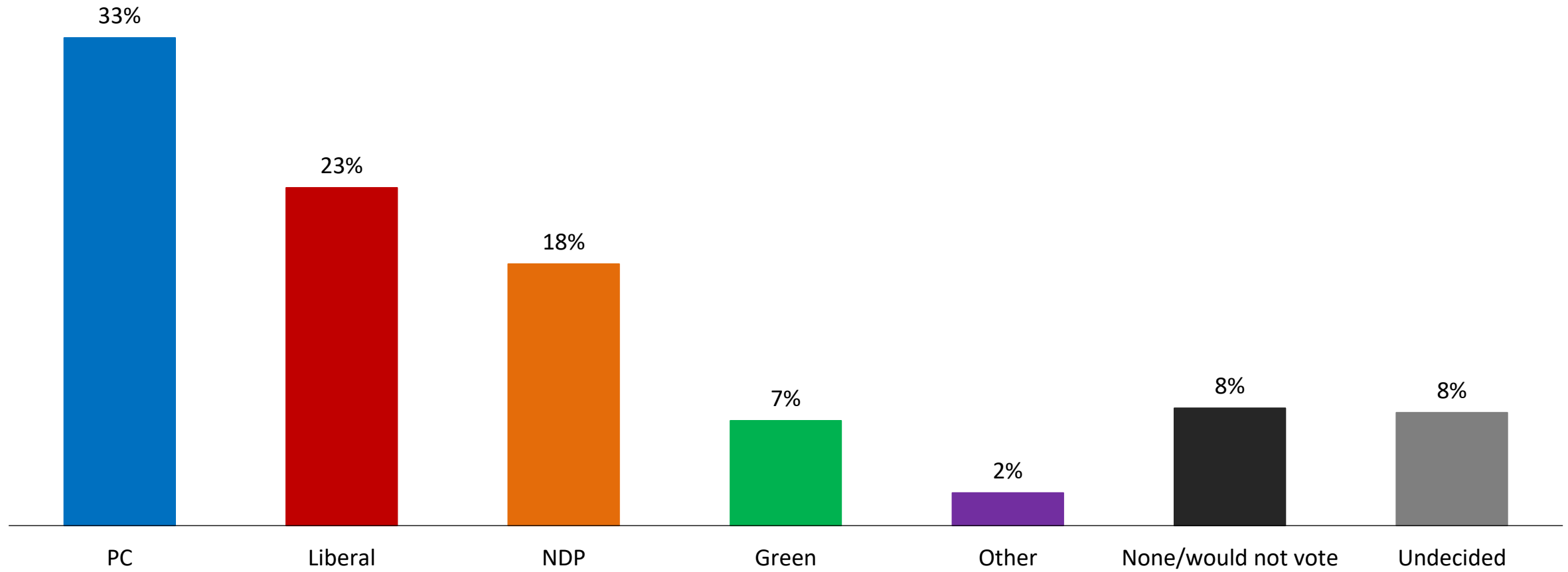
Provincial Combined Vote: The PCs (33%) lead the Liberals (23%) by 10 points, while the NDP (18%) trail by 5 points behind the Liberals



If a provincial election were held today, which party would you vote for: the Progressive Conservative Party, the Liberal Party, the New Democratic Party, the Green Party or another party?

In that case, which party's candidate do you lean toward slightly? **[Vote + Lean]**

[asked of all respondents; n=600]



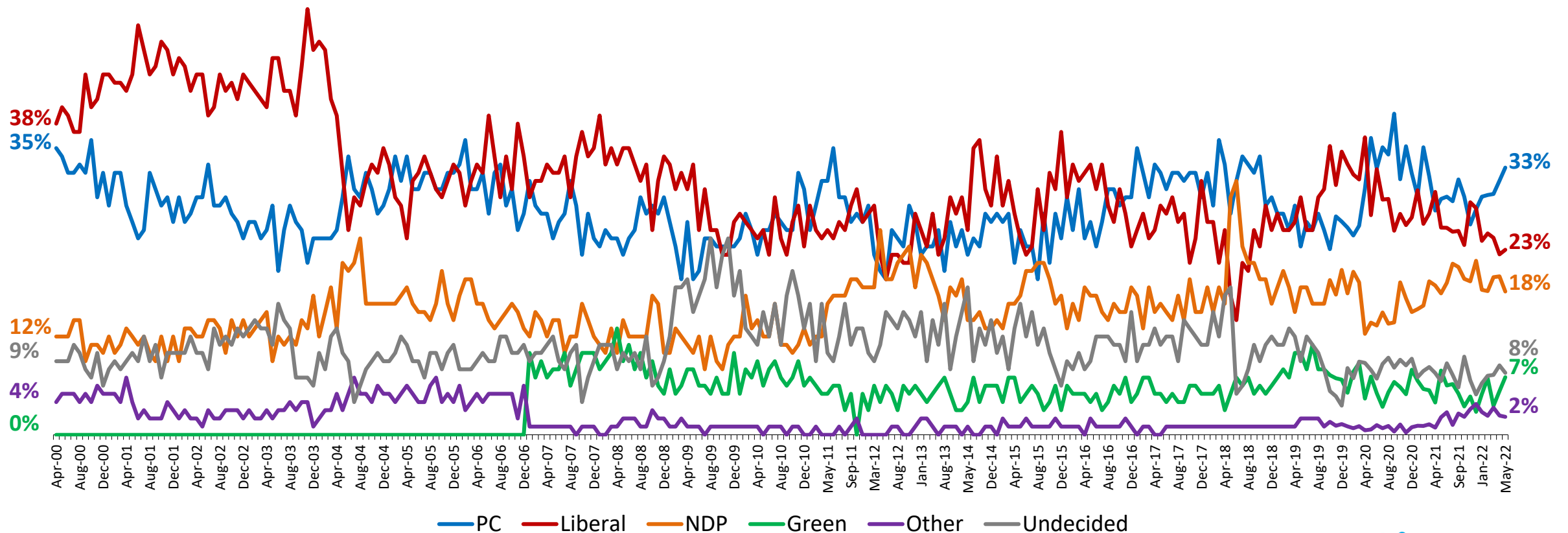
Provincial Vote Tracking: No significant change in vote since April – PCs remain well ahead of the Liberals and the NDP



If a provincial election were held today, which party would you vote for: the Progressive Conservative Party, the Liberal Party, the New Democratic Party, the Green Party or another party?

In that case, which party's candidate do you lean toward slightly? **[Vote + Lean]**

[asked of all respondents; n=600]



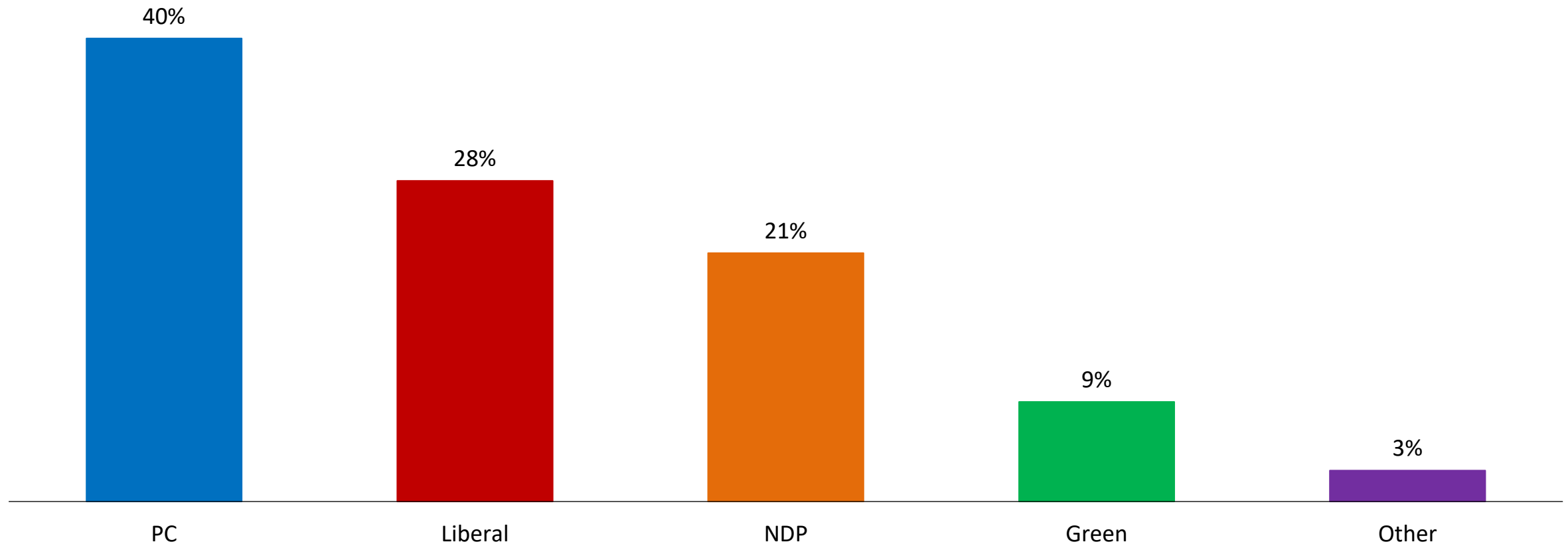
Provincial Decided Vote: Among decided voters, 40% would vote for the Progressive Conservative party, while 28% would vote Liberal



If a provincial election were held today, which party would you vote for: the Progressive Conservative Party, the Liberal Party, the New Democratic Party, the Green Party or another party?

In that case, which party's candidate do you lean toward slightly? **[DECIDED]**

[decided voters only; n=492]



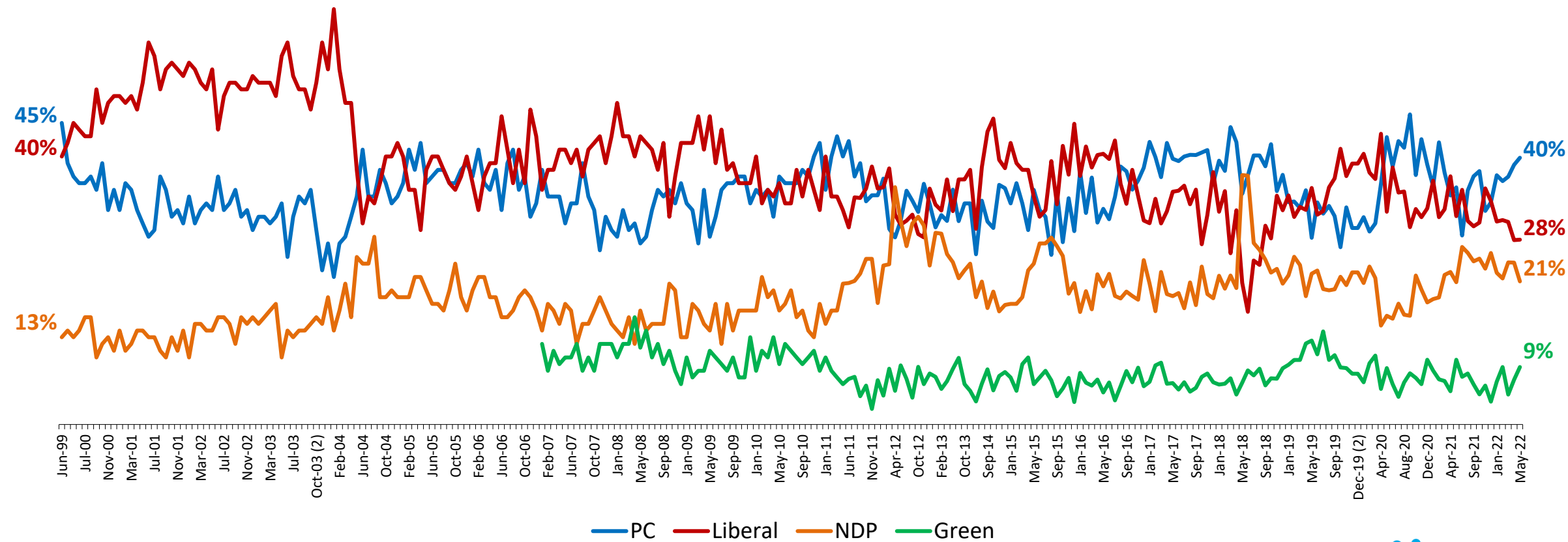
Provincial Decided Vote Tracking: The PCs still lead (40%), while the Liberals (28%) and the NDP (21%) continue to trail



If a provincial election were held today, which party would you vote for: the Progressive Conservative Party, the Liberal Party, the New Democratic Party, the Green Party or another party?

In that case, which party's candidate do you lean toward slightly? **[DECIDED]**

[only decided voters; n=492]



Note: Other not shown.
Current data: May 2022

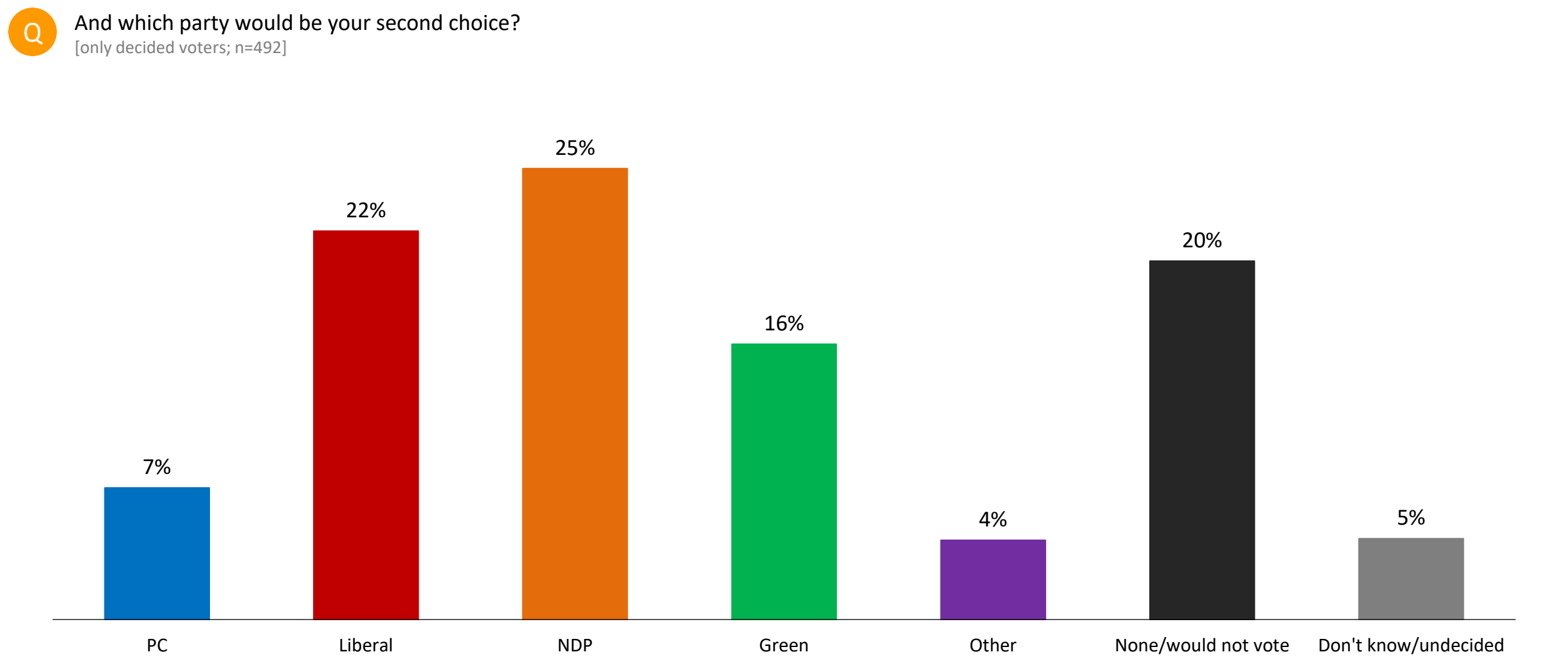
Decided Vote by Region: The PCs lead in the South/West and the North/East, the Liberals lead in the GTA, and the NDP lead in Toronto

Decided vote by Region

Decided Vote	Region				
	Toronto	GTA	South/West	North/East	
	(N=101)	(N=129)	(N=127)	(N=135)	
	PC	35%	38%	39%	46%
	Liberal	21%	40%	22%	25%
	NDP	34%	11%	25%	18%
	Green	8%	8%	10%	8%
Other	3%	2%	3%	3%	

Note: Current data: May 2022

Provincial 2nd Choice: Among decided voters, the NDP is the most popular 2nd choice (25%) followed by the Liberals (22%)



Note: 'Refused' (<1%) not shown.
Current data: May 2022

Provincial 2nd Choice: The NDP is the 2nd choice of most Liberal voters (56%) and the Liberals are the 2nd choice of most NDP voters (56%)

And which party would be your second choice? BY [Vote+Lean]

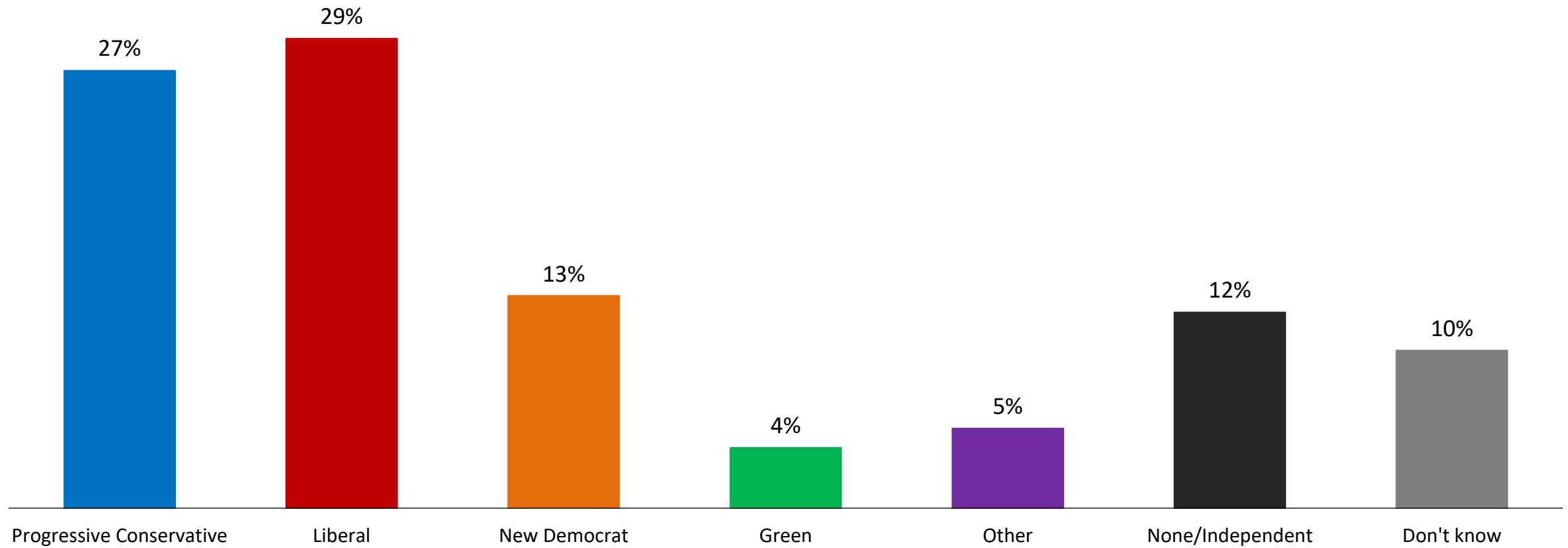
		First Choice			
		PC 1st Choice	Liberal 1st Choice	NDP 1st Choice	Green 1st Choice
		(N=196)	(N=136)	(N=105)	(N=42)
Second Choice	PC 2nd Choice		13%	7%	16%
	Liberal 2nd Choice	20%		56%	23%
	NDP 2nd Choice	17%	56%		39%
	Green 2nd Choice	17%	16%	17%	
	Other 2nd Choice	9%	1%	0%	0%
	WNV/Undecided	37%	13%	20%	22%

Note: 'Other' in Combined Vote not shown due to insufficient sample size, 'Refused' not shown.
Current data: May 2022

Provincial Party ID: The Liberals (29%) lead the PCs (27%) narrowly on partisanship, followed by the NDP (13%)



Thinking about politics in Ontario, generally speaking, do you usually think of yourself as a [RANDOMIZE FIRST 4 OPTIONS]?
[asked of all respondents; n=600]



Combined Vote by Party ID: The PC partisans are the most loyal with 85% saying they would vote for their party, followed by the NDP at 69%

		Provincial Party Identification			
		PC	Liberal	NDP	Other/Unaligned
		(N=163)	(N=175)	(N=79)	(N=184)
Provincial Combined Vote	PC	85%	12%	10%	15%
	Liberal	2%	61%	11%	10%
	NDP	3%	16%	69%	10%
	Green	1%	4%	4%	16%
	Other	4%	1%	0%	3%
	Undecided/WNV/ Refused	5%	7%	5%	46%

Note: Current data: May 2022

Phone & Online Comparison

Provincial Combined Vote: Among all voters, the PCs hold a lead both online and by telephone

13

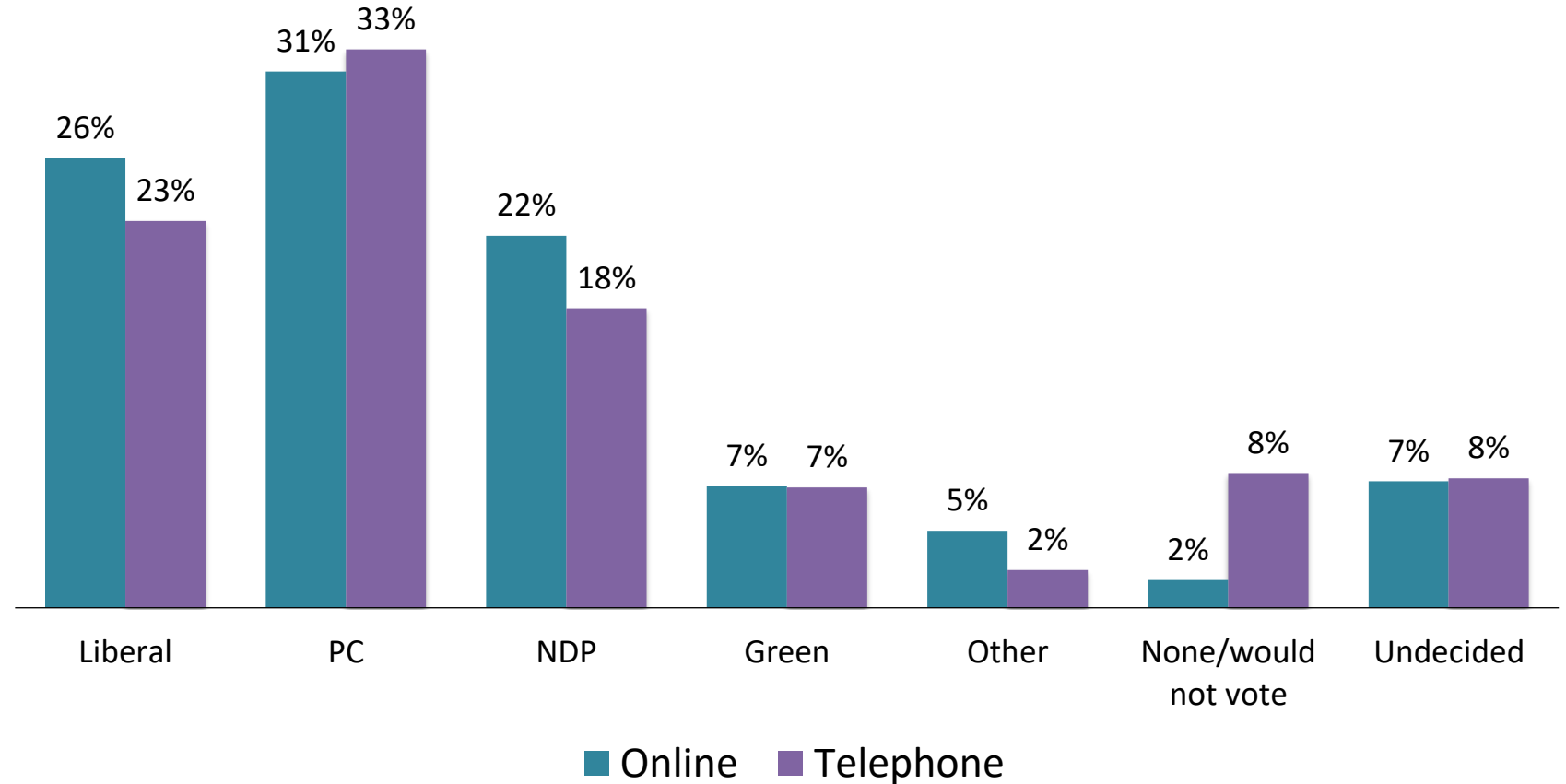
Innovative Research Group Inc. (**INNOVATIVE**) recently conducted two surveys asking Ontarians about provincial politics:

- A live-caller, mixed cell/landline RDD telephone survey of 602 Ontarians (weighted to n=600 using Census data from Statistics Canada) conducted from May 17th to 27th, 2022.
- An online panel survey of 910 Ontarians (weighted to n=700 using Census data from Statistics Canada and party ID) conducted from May 26th to 30th, 2022.



If a provincial election were held today, which party would you vote for? In that case, which party do you lean toward slightly? **[Vote+Lean]**

[decided voters only; online n=700; telephone n=600]



Provincial Decided Vote: The PCs lead by a larger margin by telephone than online¹⁴

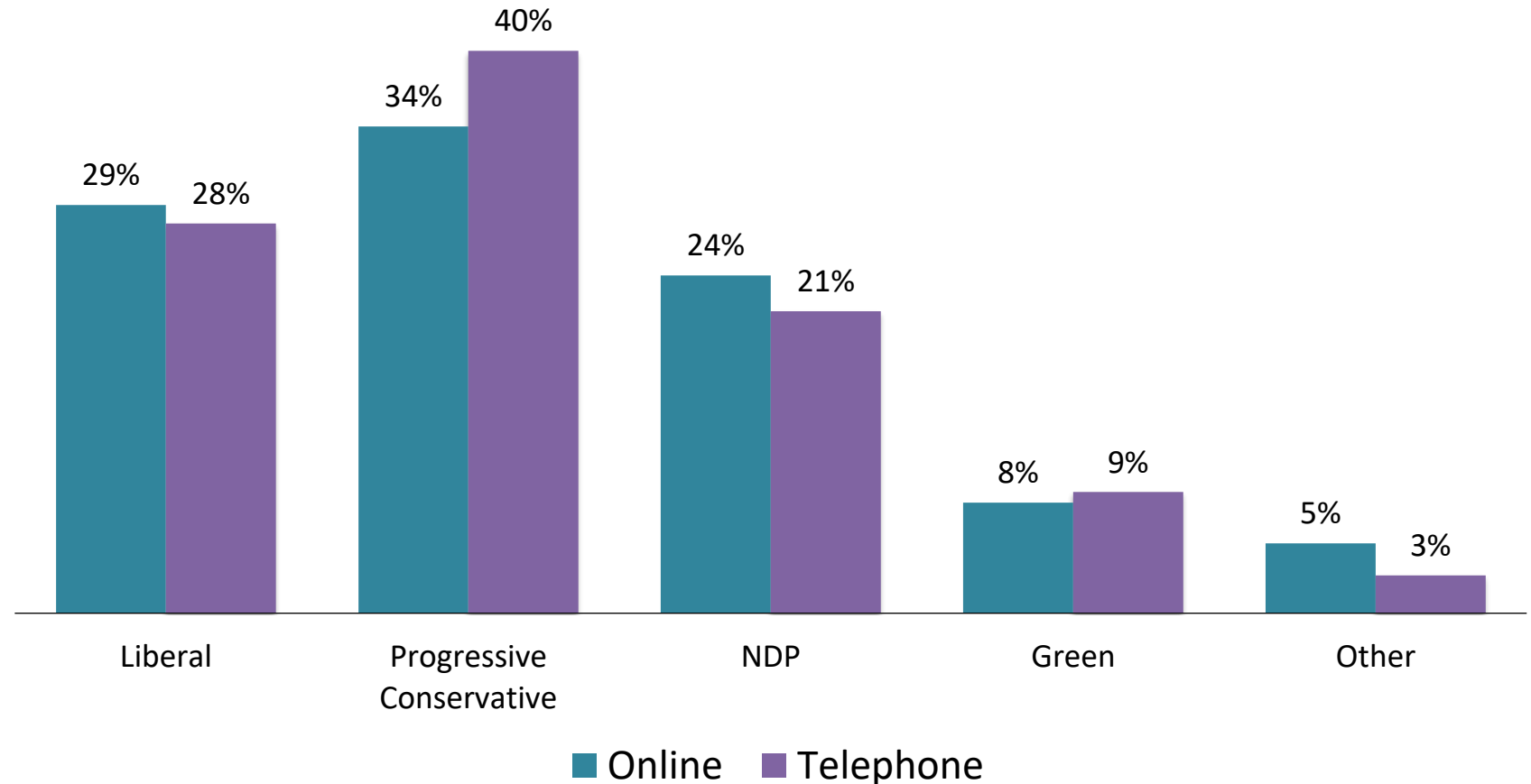
Innovative Research Group Inc. (**INNOVATIVE**) recently conducted two surveys asking Ontarians about provincial politics:

- A live-caller, mixed cell/landline RDD telephone survey of 602 Ontarians (weighted to n=600 using Census data from Statistics Canada) conducted from May 17th to 27th, 2022.
- An online panel survey of 910 Ontarians (weighted to n=700 using Census data from Statistics Canada and party ID) conducted from May 26th to 30th, 2022.



If a provincial election were held today, which party would you vote for? In that case, which party do you lean toward slightly? **[DECIDED]**

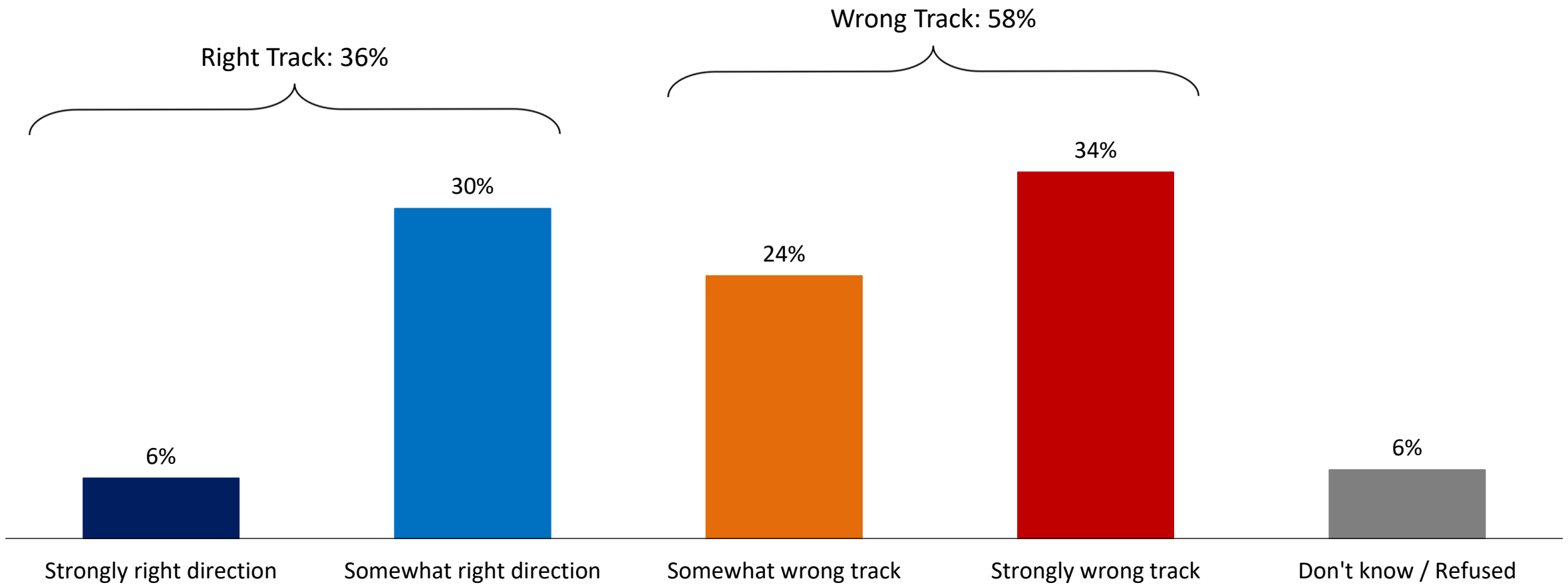
[decided voters only; online n=637; telephone n=492]



Landscape

Ontario Mood: 58% of Ontarians feel that things have gotten off on the wrong track with 34% of Ontarians feeling strongly about this

Q Generally speaking, do you feel things in Ontario are going in the right direction, or do you feel things have gotten off on the wrong track? And do you feel strongly or somewhat strongly about that?
[asked of all respondents; n=600]

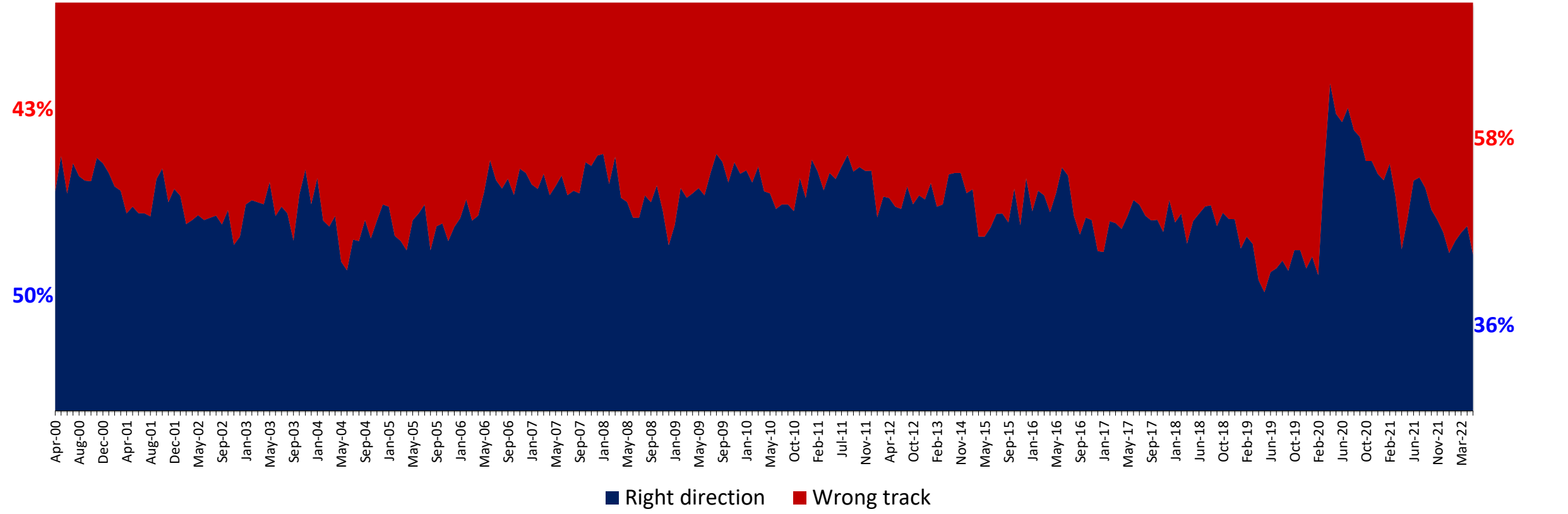


Ontario Mood Tracking: The moods of Ontarians are worsening with 8% more respondents feeling that things have gone on the wrong track



Generally speaking, do you feel things in Ontario are going in the right direction, or do you feel things have gotten off on the wrong track? And do you feel strongly or somewhat strongly about that?

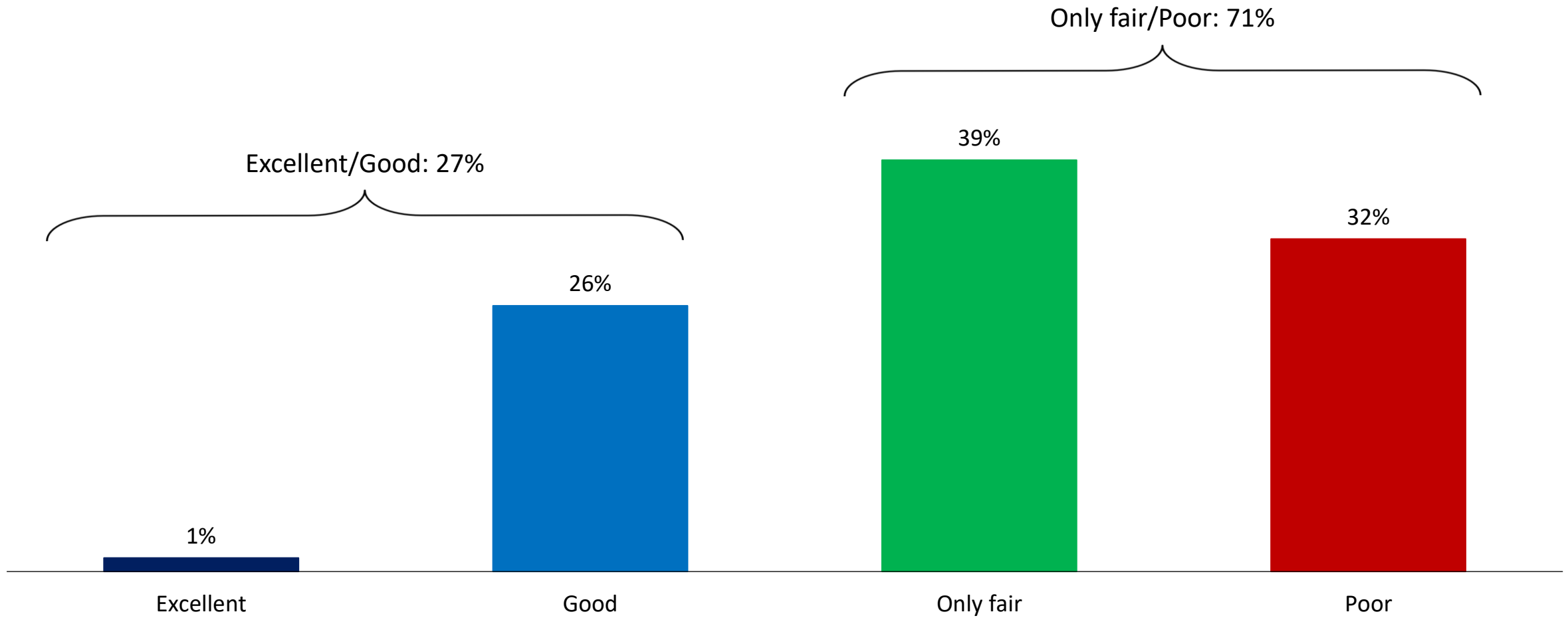
[asked of all respondents; n=600]



Note: Don't know / Refused not shown.
Current data: May 2022

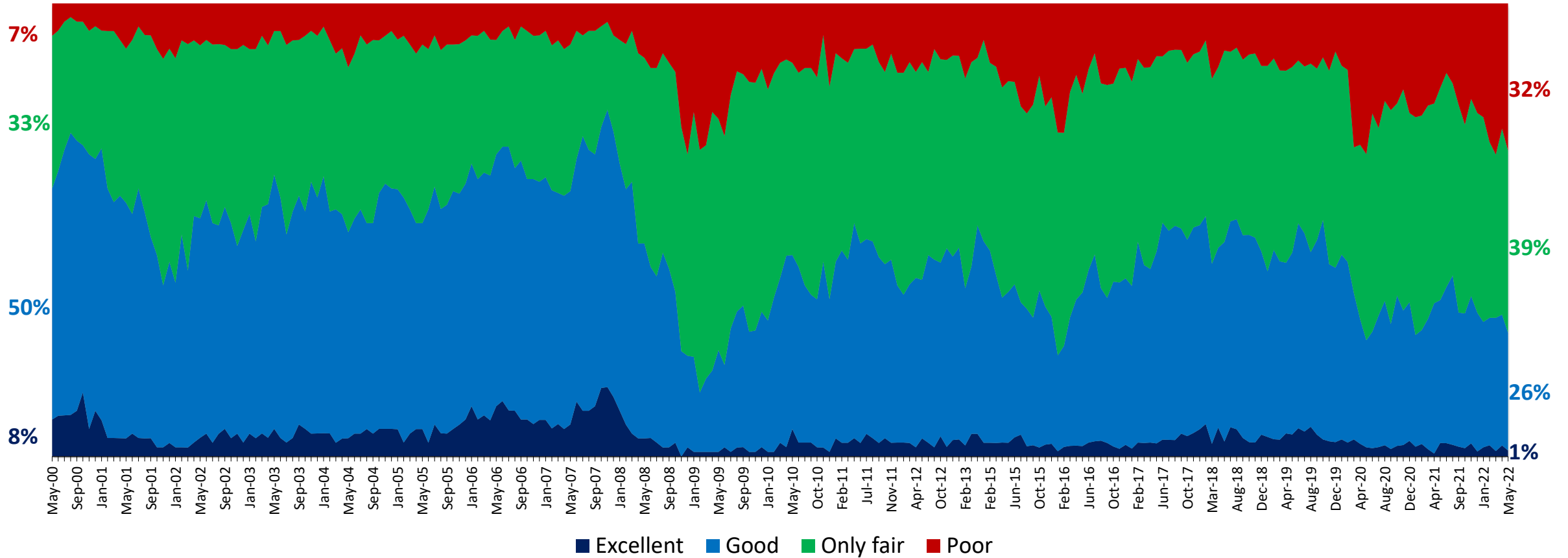
Canada's Economy: Nearly $\frac{3}{4}$ of Ontarians (71%) feel that Canada's economy is only fair/poor; only 1% think Canada's economy is excellent

Q How would you describe Canada's economy today? Would you say it is...
[asked of all respondents; n=600]



Economy Tracking: Ontarians think the economy is getting worse; 5% more people think that the economy is poor in May 2022 than in April

Q How would you describe Canada's economy today? Would you say it is...
[asked of all respondents; n=600]



Appendix: Methodology

Survey Methodology

These are the results of a telephone survey conducted between May 17th and 27th, 2022.

Method: This survey was conducted by telephone among 602 randomly-selected Ontario residents who are Canadian citizens, 18 years of age and older, from May 17th and 27th, 2022. Only one respondent per household was eligible to complete this survey. The final sample includes both landline and cell phone respondents, so that individuals who don't have a landline are represented.

Sample Size: n=602 Ontario residents, 18 years or older. The results are weighted to n=600 based on Census data from Statistics Canada.

Field Dates: May 17th, 2022 to May 27th, 2022.

Weighting: The sample has been weighted (n=600) by age, gender and region using the latest available Census data to reflect the actual demographic composition of the population. For tracking data, results are always weighted based on the most recent available Census data.

Margin of Error: The margin of error for a sample of n=600 is approximately +/-4.0%.

Note: Graphs may not always total 100% due to rounding values rather than any error in data. Sums are added before rounding numbers.

	Unweighted (n)	Unweighted (%)	Weighted (n)	Weighted (%)
Men 18-34	53	8.8%	82	13.7%
Men 35-54	77	12.8%	99	16.5%
Men 55+	145	24%	105	17.6%
Women 18-34	41	6.8%	82	13.7%
Women 35-54	87	14.4%	106	17.7%
Women 55+	196	32.5%	121	20.1%
Toronto	107	17.7%	126	20.9%
Rest of GTA	173	28.7%	156	26%
South/West	154	25.5%	155	25.8%
North/East	169	28%	163	27.2%

For more information, please contact:

Greg Lyle

President

(t) 416-642-6429

(e) glyle@innovativeresearch.ca

Building Understanding.

