



**Governments Through  
The Pandemic**

**Public Opinion Research**  
**Release Date: January 19, 2022**

**Field Dates: January 06, 2022 to January 11, 2022**

# Impact on Governments

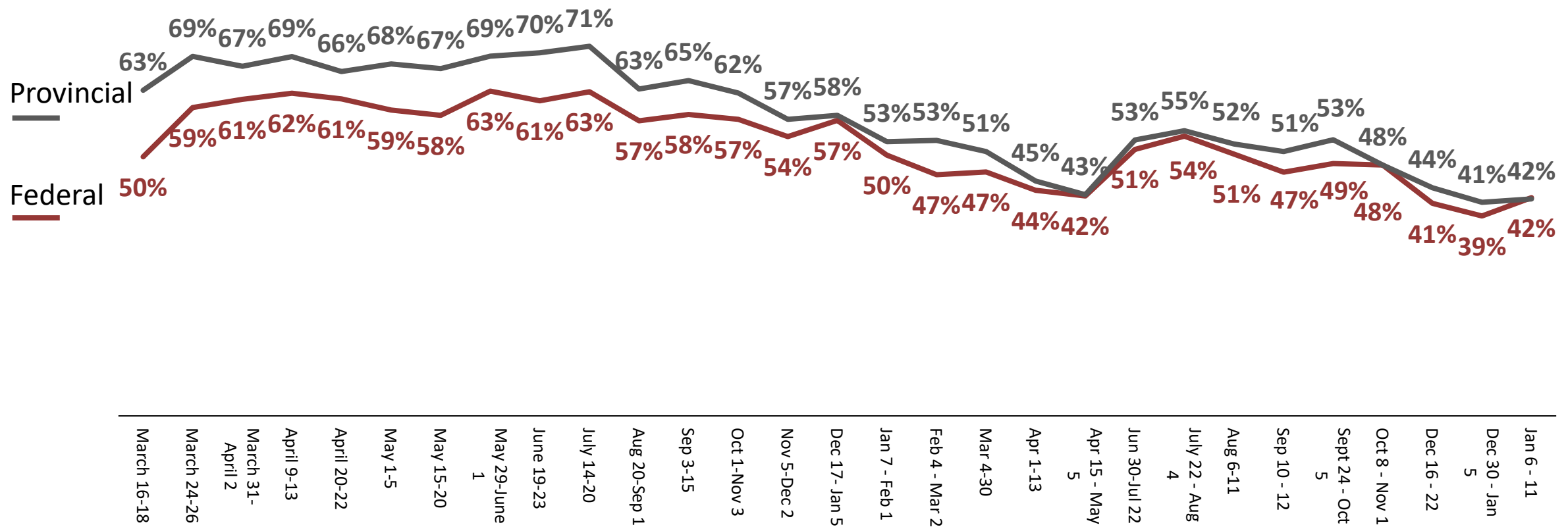
Since the early days of the COVID-19 outbreak in Canada, INNOVATIVE has been tracking attitudes towards governments.

Today, INNOVATIVE is releasing results from our January *Canada This Month* survey. This online survey was in field from January 6<sup>th</sup> to January 11<sup>th</sup>, 2022, with a weighted sample size of 1,200 Canadian residents. Detailed methodology is provided in the appendix.

This report covers how Canadians feel about their governments and the decisions their governments have made through the pandemic.

# COVID-19 Handling Tracking: Approval of federal handling of the pandemic is up from 39% to 42%

**% who approve** of government's handling of the COVID-19 outbreak: Federal vs. Provincial  
 [asked of all respondents; n=1,200]

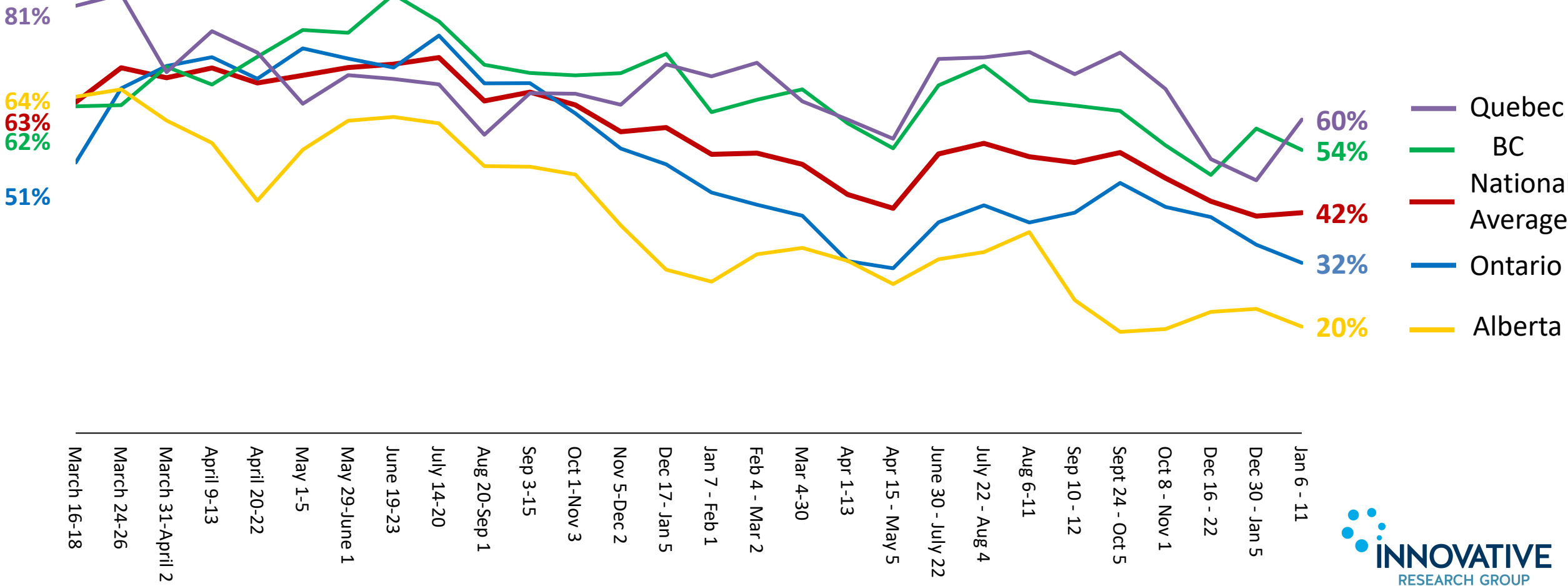


# COVID-19 Provincial Handling Tracking: Approval of the Quebec government is up since early January



Do you approve or disapprove of the way the [PROV] Government has handled the outbreak of COVID-19?  
[asked of all respondents; n=1,200]

### % Approve



Current data: January 2022



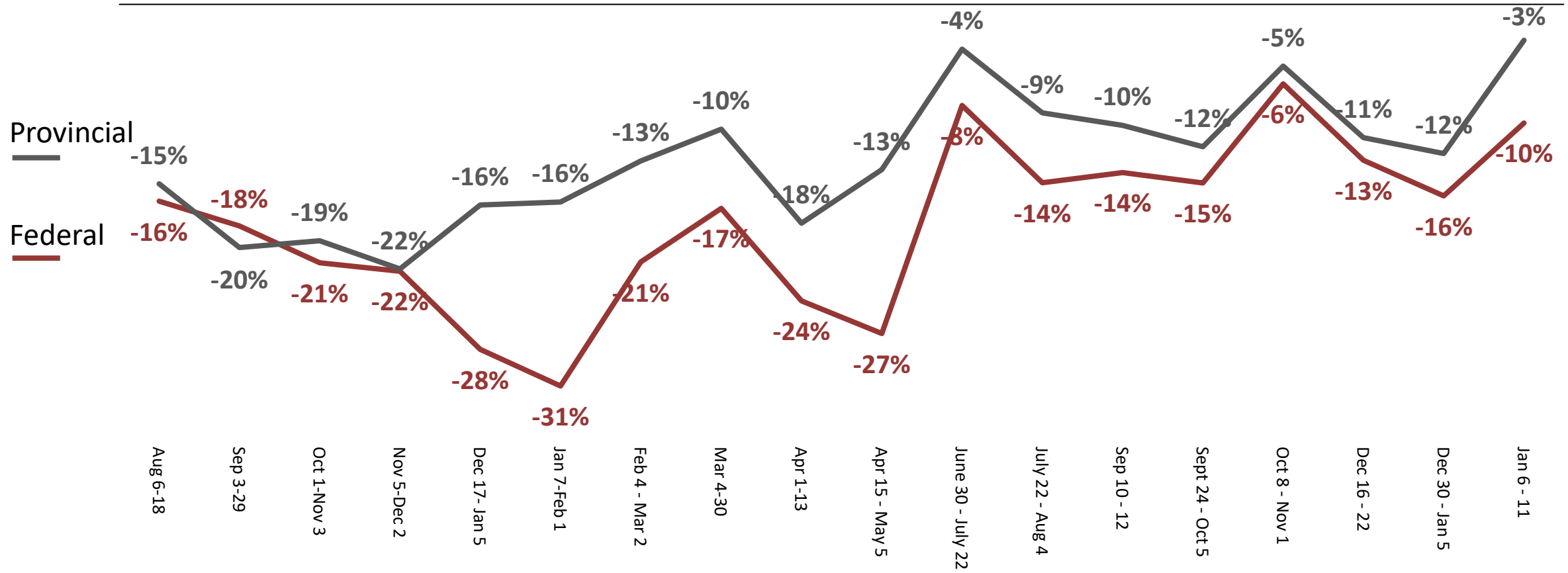
# COVID-19 Restrictions Tracking: The share of Canadians who think restrictions are too tight in their province is up



Now, thinking about the restrictions the provincial government/federal government currently has in place to reduce social contacts and combat the spread of COVID-19, do you think the restrictions are too tight, too loose, or are they about right?

[asked of all respondents; n=1,200]

### Net Tight (% too tight - % too loose)

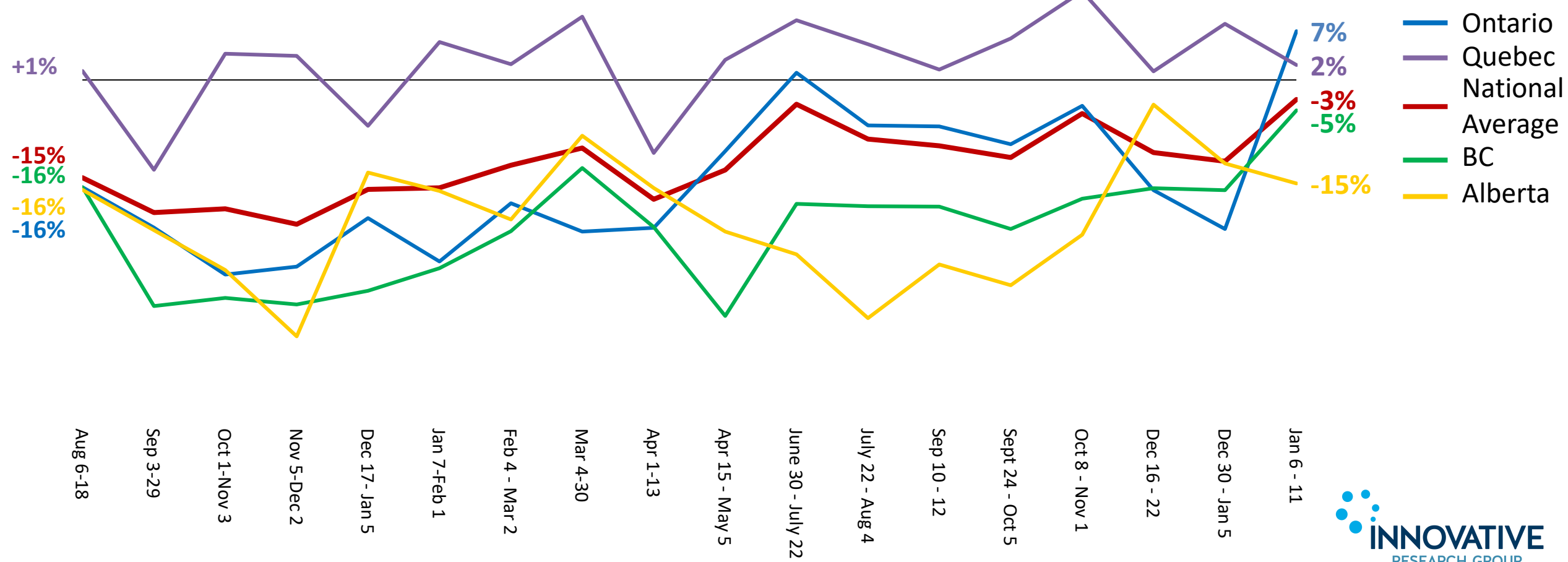


# COVID-19 Provincial Restrictions: After the latest round of restrictions, Ontarians are far more likely to say restrictions are too tight



Now, thinking about the restrictions the provincial government in [PROV] currently has in place to reduce social contacts and combat the spread of COVID-19, do you think the restrictions are too tight, too loose, or are they about right?  
[asked of all respondents; n=1,200]

### Net Tight (% too tight - % too loose)

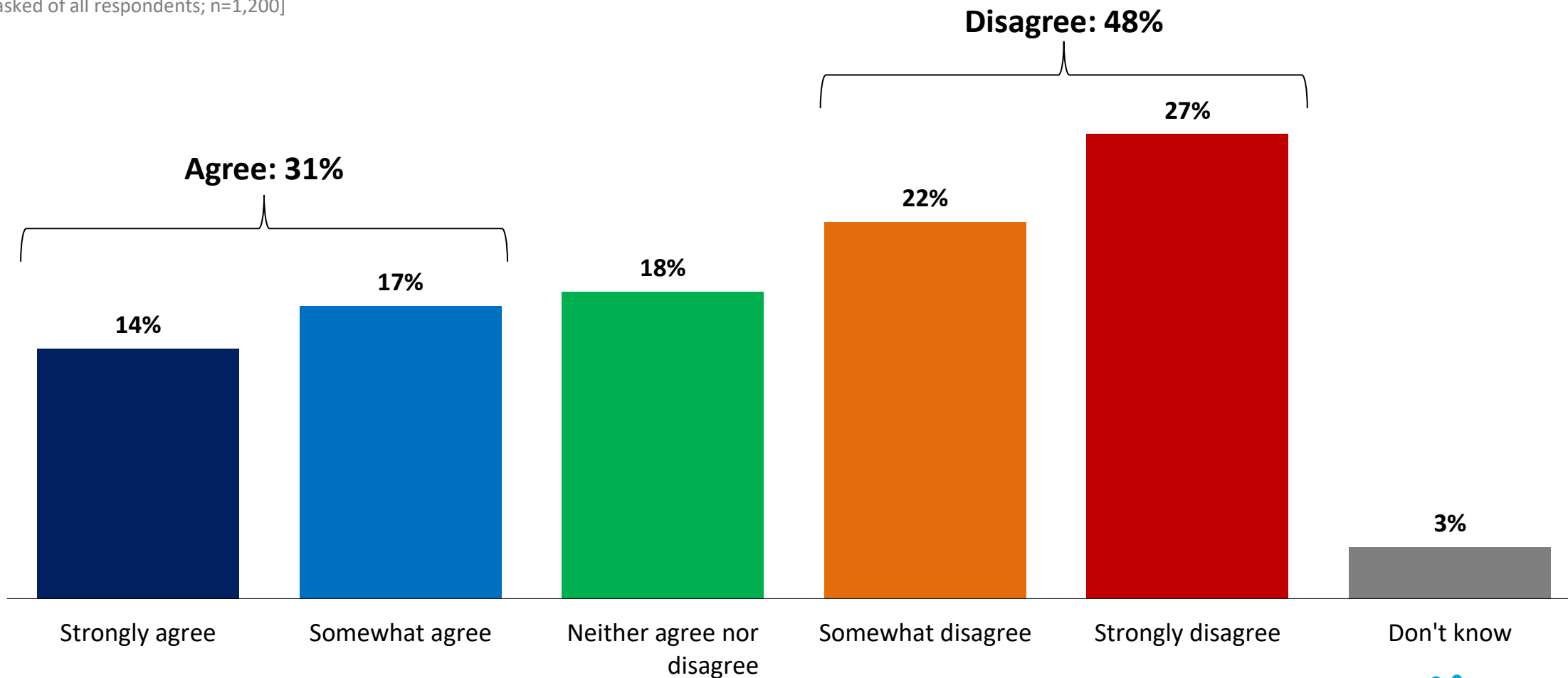


# Current Lockdown: Nearly a third agree the current lockdown is an overreaction



Do you agree or disagree with the following statements? *The current lockdown is an overreaction because latest COVID-19 wave is milder than previous waves*

[asked of all respondents; n=1,200]

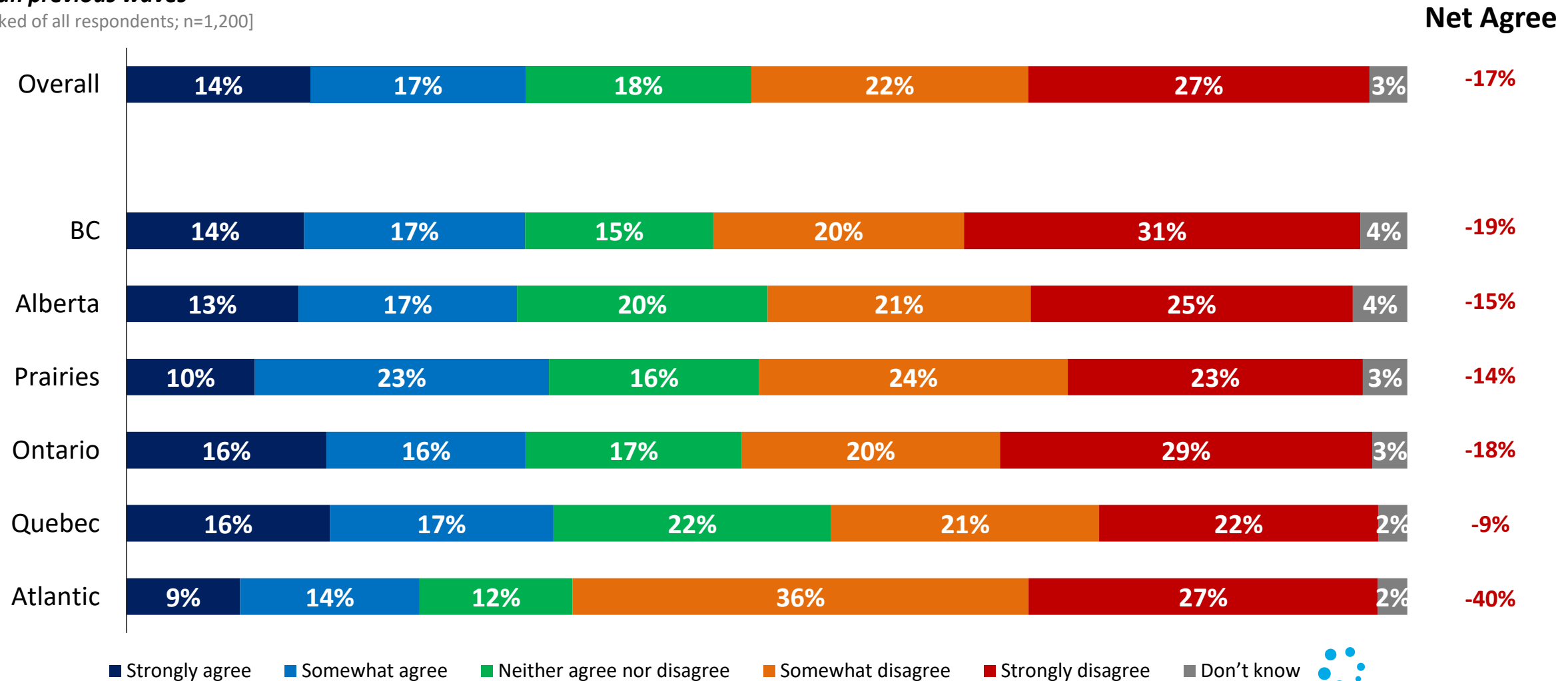


# Current Lockdown: Agreement is highest in Quebec and the Prairies; lowest in Atlantic Canada



Do you agree or disagree with the following statements? *The current lockdown is an overreaction because latest COVID-19 wave is milder than previous waves*

[asked of all respondents; n=1,200]

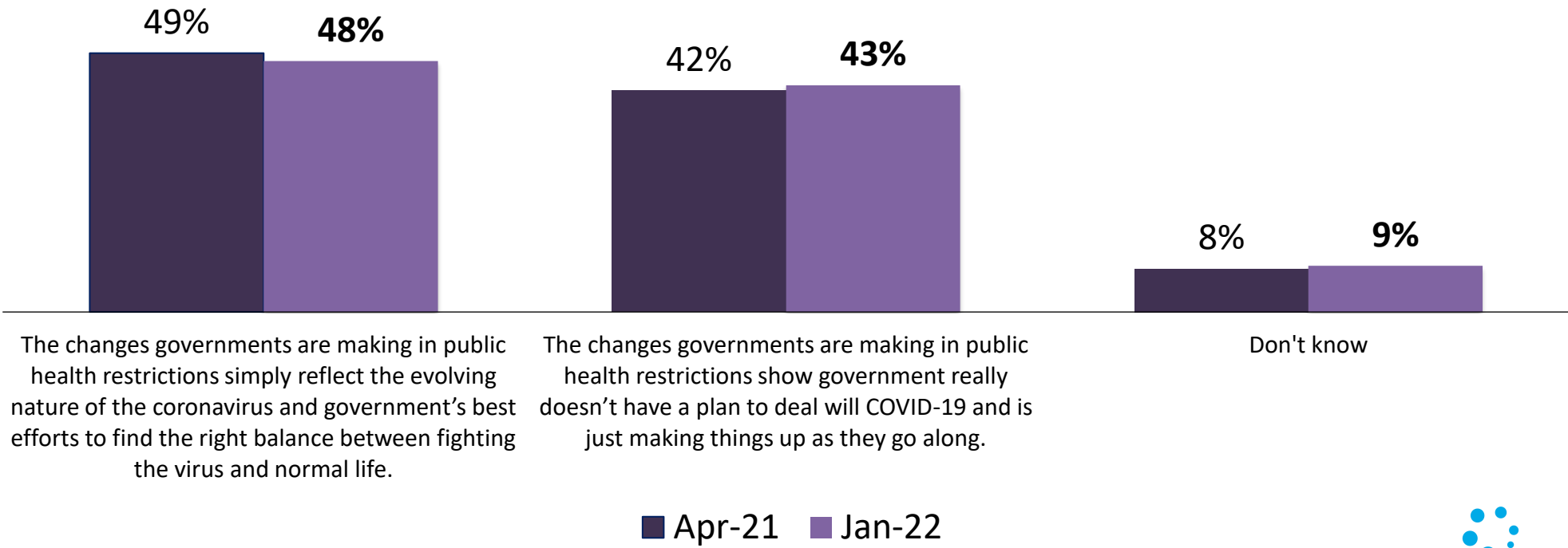




# Public Health Restrictions: The share of Canadians who say that the governments doesn't have a plan is steady since April 2021



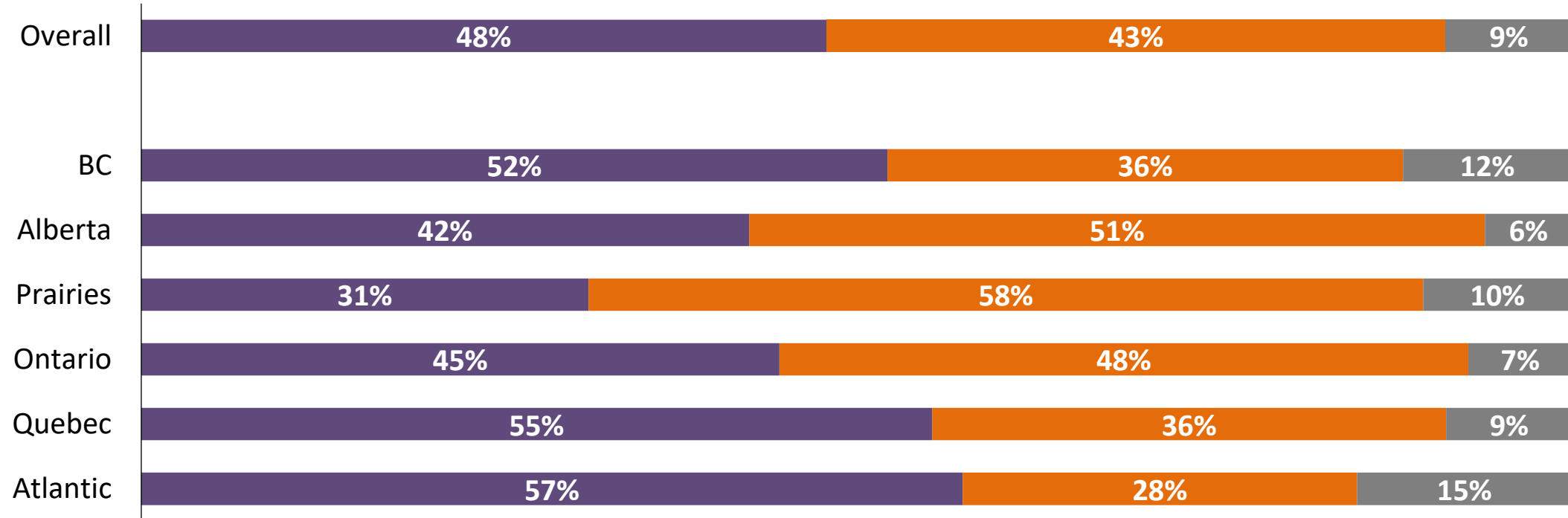
There have a number of changes in the public health restrictions in many places in Canada. Which of the following points of view is closest to your own?  
[asked of all respondents; n=1,200]



# Public Health Restrictions: Belief that the changing restrictions are a sign governments have no plan is highest in the Prairies and Alberta



There have a number of changes in the public health restrictions in many places in Canada. Which of the following points of view is closest to your own?  
[asked of all respondents; n=1,200]



- The changes governments are making in public health restrictions simply reflect the evolving nature of the coronavirus and government's best efforts to find the right balance between fighting the virus and normal life.
- The changes governments are making in public health restrictions show government really doesn't have a plan to deal will COVID-19 and is just making things up as they go along.
- Don't know

# Methodology

The background of the slide is a solid dark blue color. It features several faint, light blue circles of varying sizes scattered across the surface, creating a subtle pattern.

# Survey Methodology

**These are the results of an online survey conducted between January 6<sup>th</sup> and 11<sup>th</sup>, 2022.**

**Method:** This online survey was conducted using INNOVATIVE's Canada 20/20 national research panel with additional respondents from Dynata, a leading provider of online samples. Each survey is administered to a series of randomly selected samples from the panel and weighted to ensure that the overall sample's composition reflects that of the actual Canadian population according to Census data to provide results that are intended to approximate a probability sample.

**Sample Size:** n=1,420 Canadian citizens, 18 years or older. The results are nationally weighted to n=1,200 based on Census data from Statistics Canada.

**Field Dates:** January 6<sup>th</sup> and 11<sup>th</sup>, 2022.

**Weighting:** Results for Canada are weighted by age, gender, region, and party identification to ensure that the overall sample's composition reflects that of the actual population according to Census data; in order to provide results that are intended to approximate a probability sample. Weighted and unweighted frequencies are reported in the table.

**Margin of Error:** This is a representative sample. However, since the online survey was not a random probability based sample, a margin of error cannot be calculated. Statements about margins of sampling error or population estimates do not apply to most online panels.

**Note:** Graphs may not always total 100% due to rounding values rather than any error in data. Sums are added before rounding numbers.

	Unweighted (n)	Unweighted (%)	Weighted (n)	Weighted (%)
<b>Men 18-34</b>	140	9.9%	174	14.6%
<b>Men 35-54</b>	190	13.5%	195	16.4%
<b>Men 55+</b>	298	21.1%	210	17.6%
<b>Women 18-34</b>	205	14.5%	172	14.5%
<b>Women 35-54</b>	258	18.3%	202	17.0%
<b>Women 55+</b>	318	22.6%	237	19.9%
<b>Region</b>				
<b>BC</b>	214	15.1%	164	13.6%
<b>AB</b>	201	14.2%	135	11.2%
<b>Prairies</b>	89	6.3%	78	6.5%
<b>ON</b>	516	36.3%	460	38.4%
<b>QC</b>	312	22.0%	281	23.4%
<b>Atlantic</b>	88	6.2%	82	6.8%



For more information, please contact:

**Greg Lyle**

**President**

(416) 642-6429

[glyle@innovativeresearch.ca](mailto:glyle@innovativeresearch.ca)

**Building Understanding.**

