



Canada This Month Political Landscape

Public Opinion Research
Release Date: March 5, 2021
Field Dates: February 04 to March 02, 2021

Political Landscape

The COVID-19 outbreak has set off a series of changes in the Canadian political landscape. Approval of provincial government's handling of the pandemic has increased sharply in Alberta (34%) and directionally in Quebec (70%) and BC (63%), with a decrease in those who approve in Ontario (43%), although a majority still approve. Furthermore, there was a decrease amongst those who think the provincial restriction are too loose (37%).

Today, INNOVATIVE is releasing results from our February 2021 *Canada This Month* survey. This online survey was in field from February 4th to March 2nd, 2021 with a weighted sample size of 2,000. Detailed methodology is provided in the appendix.

This report covers key results on how Canadians are rating their government's handling of COVID-19, whether they think provincial and federal governments have a plan to handle the pandemic, and whether they believe current restrictions are too tight or too loose.

Government Approval

Approval of the provincial governments handling of the COVID-19 outbreak is up by 5 points since January '21 when it reached its lowest level since tracking began. However, approval of the federal government is steady at its lowest level since the beginning of the outbreak.

Satisfaction with provincial handling of COVID-19 has seen a slight increase in all major provinces except Ontario, most significantly in Alberta (29% in January '21 to 34% now).

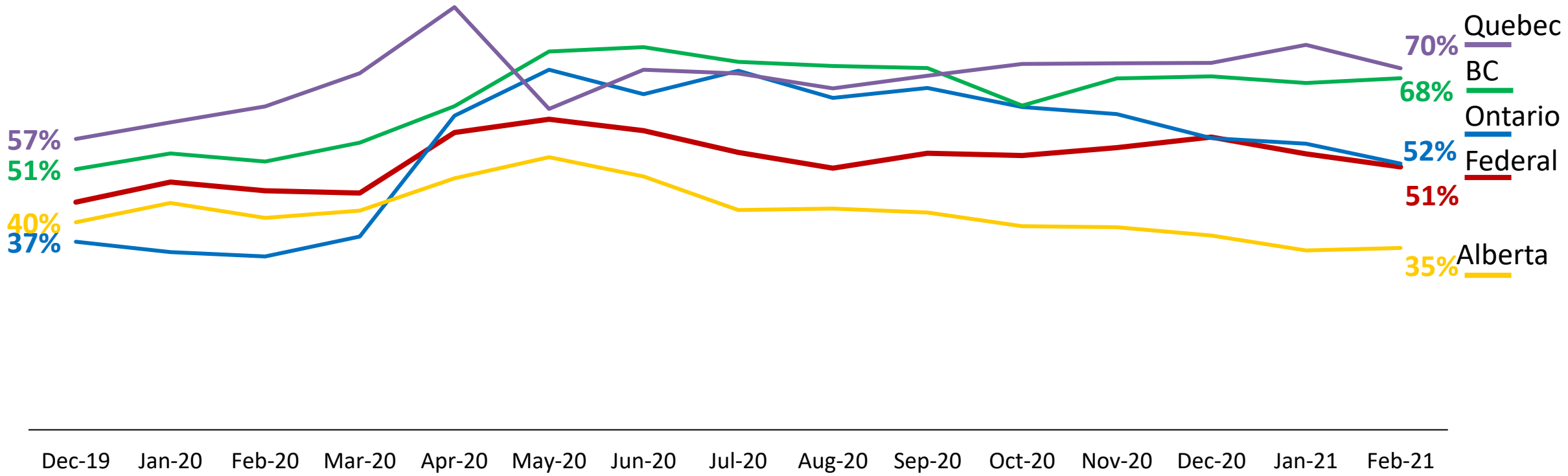
Overall Approval: Approval of the Alberta gov't remains the lowest while approval of the BC and Quebec gov'ts are the highest



[Federal government] Generally speaking, how satisfied are you with the performance of the FEDERAL government in Canada? Would you say you are...?
[Provincial governments] Generally speaking, how satisfied are you with the performance of the PROVINCIAL government in [PROV]? Would you say you are...?

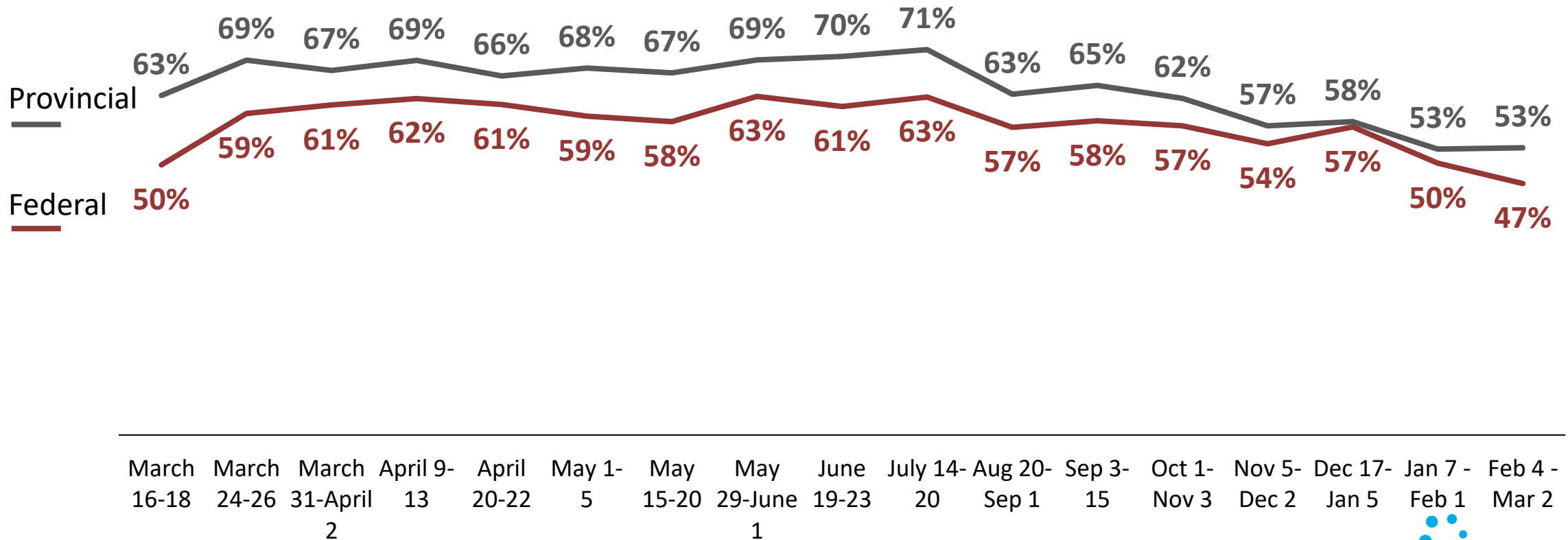
[asked of all respondents; n=2,000]

% who say they are "very/somewhat satisfied"



COVID-19 Handling Tracking: Approval of prov. handling still at lowest point while approval of federal handling drops to at an all time lowest

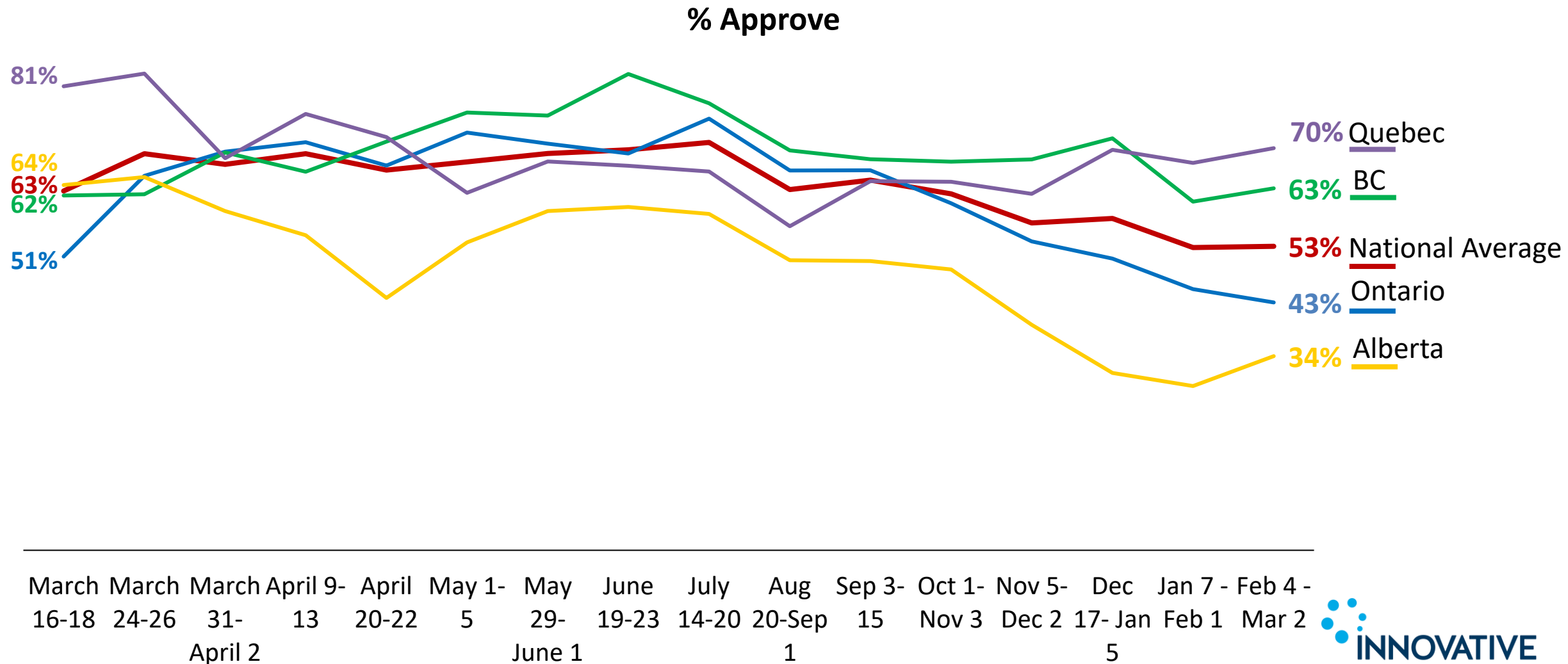
% who approve of government’s handling of the COVID-19 outbreak: Federal Vs. Provincial
 [asked of all respondents; n=2,000]



COVID-19 Provincial Handling Tracking: All provinces except Ontario see⁶ a slight increase in approval; national average steady at 53% since Jan'21



Do you approve or disapprove of the way the [PROV] Government has handled the outbreak of COVID-19?
[asked of all respondents; n=2,000]



Restrictions

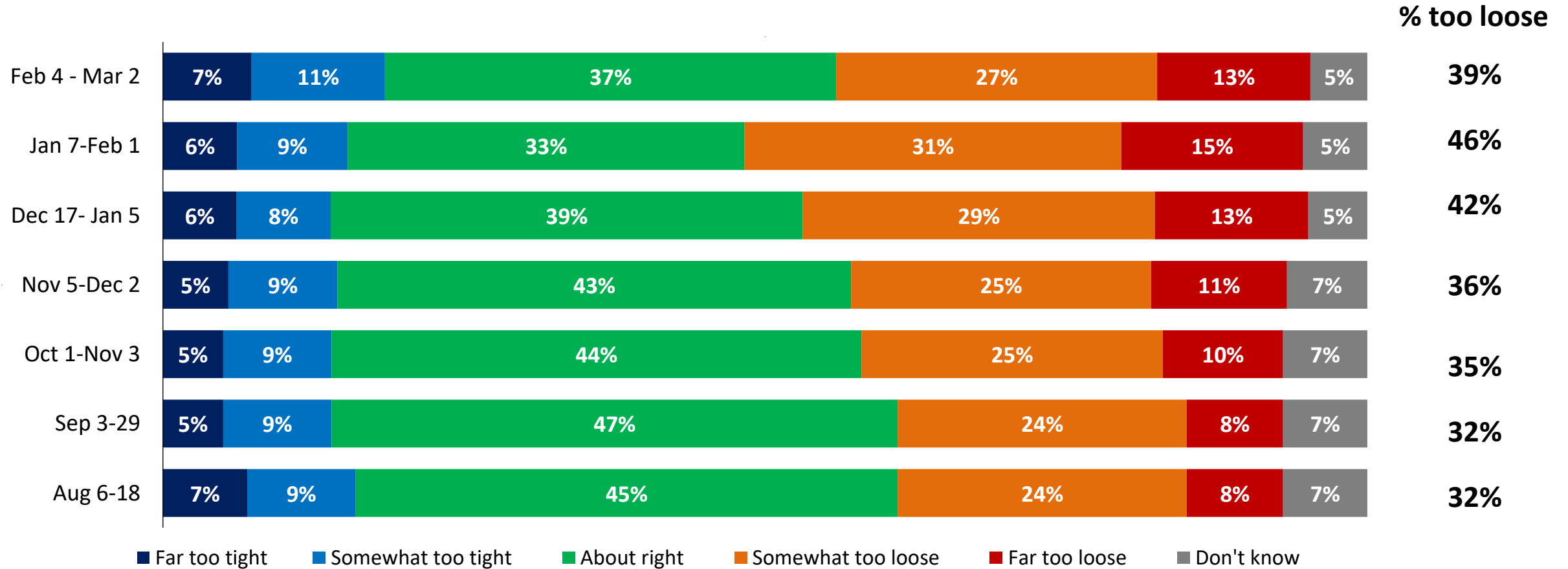
Nationally, there has been a decrease (-7%) in the share of Canadians who think the federal restrictions put in place are 'too loose' after the announcement of mandatory hotel quarantines for returning travelers in late January. Those in BC and Ontario are also down this month on saying restrictions put in place by their provincial government are 'too loose'.

Federal Restrictions: 2-in-5 (39%) say that restrictions put in place by the federal gov't are 'too loose', 7 points lower than January 2021



Now, thinking about the restrictions the federal government currently has in place to reduce social contacts and combat the spread of COVID-19, do you think the restrictions are too tight, too loose, or are they about right?

[asked of all respondents; n=2,000]



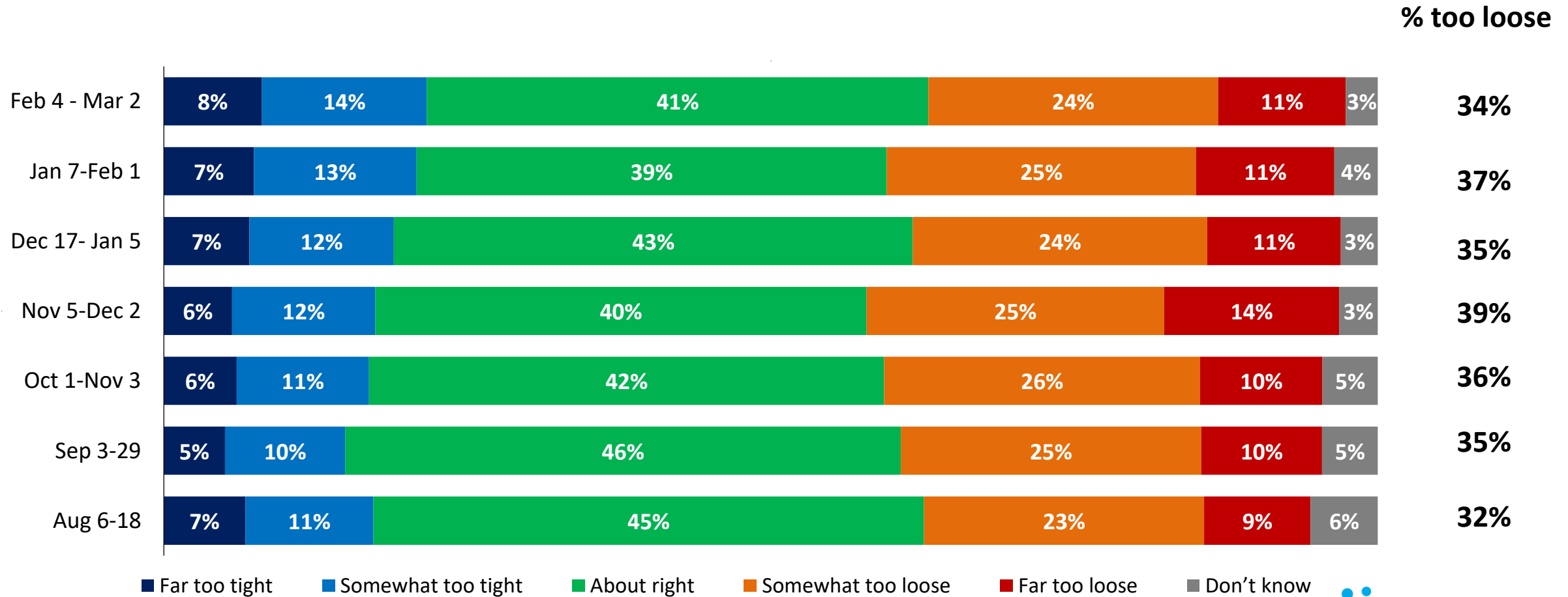
Note: Current data February 2021

Provincial Restrictions: Close to 1-in-3 (34%) say their province's restrictions are too loose



Now, thinking about the restrictions the provincial government in [PROV] currently has in place to reduce social contacts and combat the spread of COVID-19, do you think the restrictions are too tight, too loose, or are they about right?

[asked of all respondents; n=2,000]

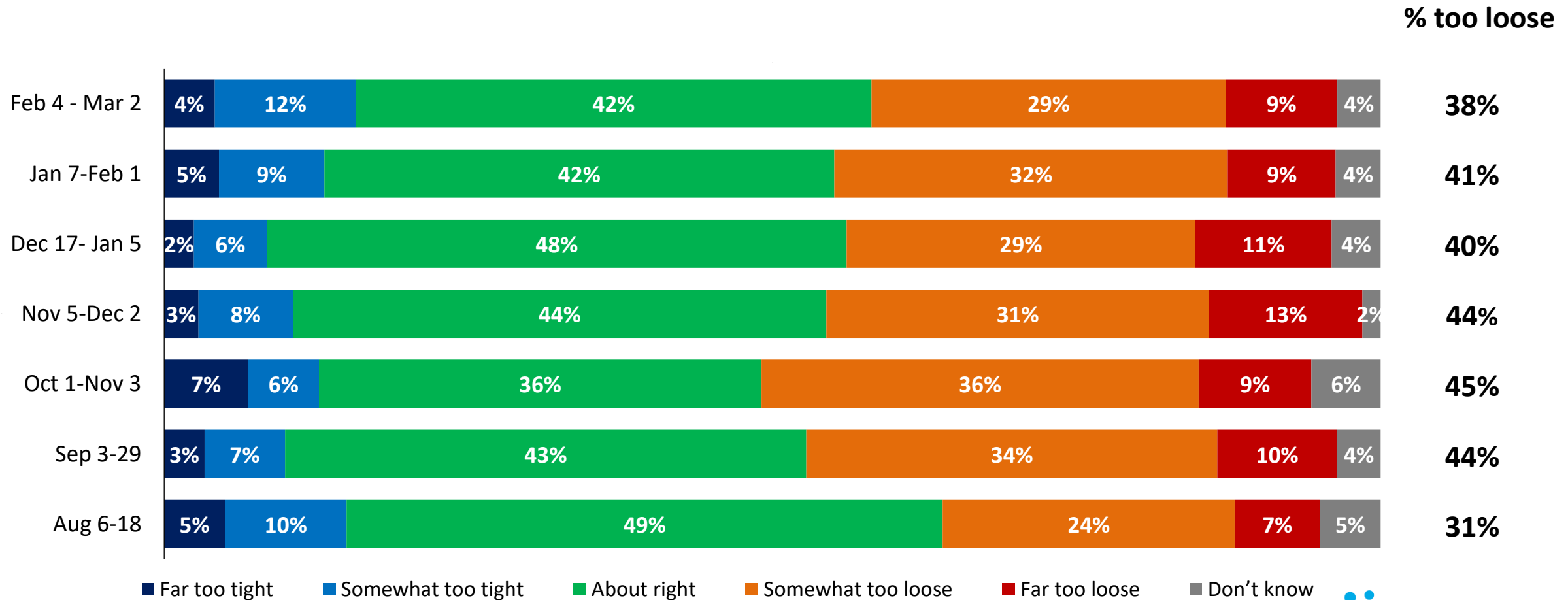


Provincial Restrictions - BC: In BC, 2-in-5 (42%) say the restrictions are 'about right' while 38% say they are 'too loose'



Now, thinking about the restrictions the provincial government in [PROV] currently has in place to reduce social contacts and combat the spread of COVID-19, do you think the restrictions are too tight, too loose, or are they about right?

[asked of BC respondents; n=300]

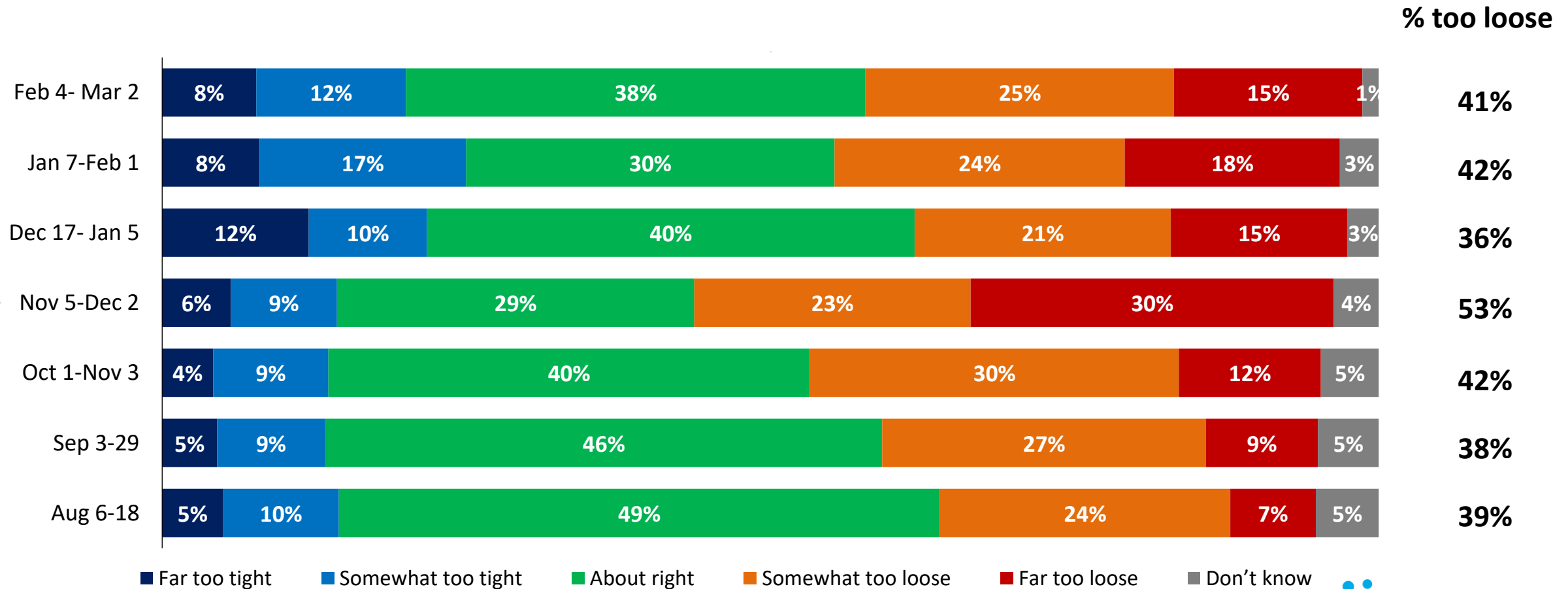


Provincial Restrictions - Alberta: The share of Albertans who say restrictions are too loose is steady since January 2021



Now, thinking about the restrictions the provincial government in [PROV] currently has in place to reduce social contacts and combat the spread of COVID-19, do you think the restrictions are too tight, too loose, or are they about right?

[asked of AB respondents; n=300]

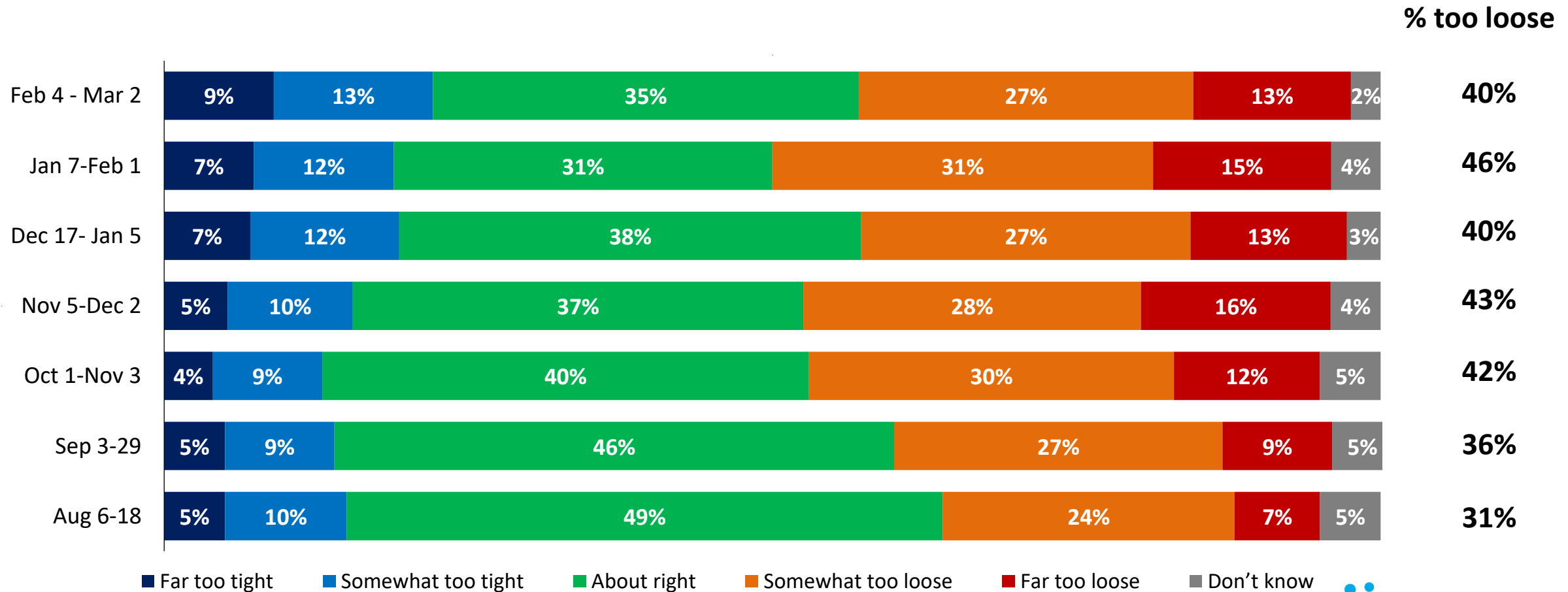


Provincial Restrictions - Ontario: Ontarians saying restrictions are 'too loose' is down since late January 2021 from 46% to 40%



Now, thinking about the restrictions the provincial government in [PROV] currently has in place to reduce social contacts and combat the spread of COVID-19, do you think the restrictions are too tight, too loose, or are they about right?

[asked of ON respondents; n=800]

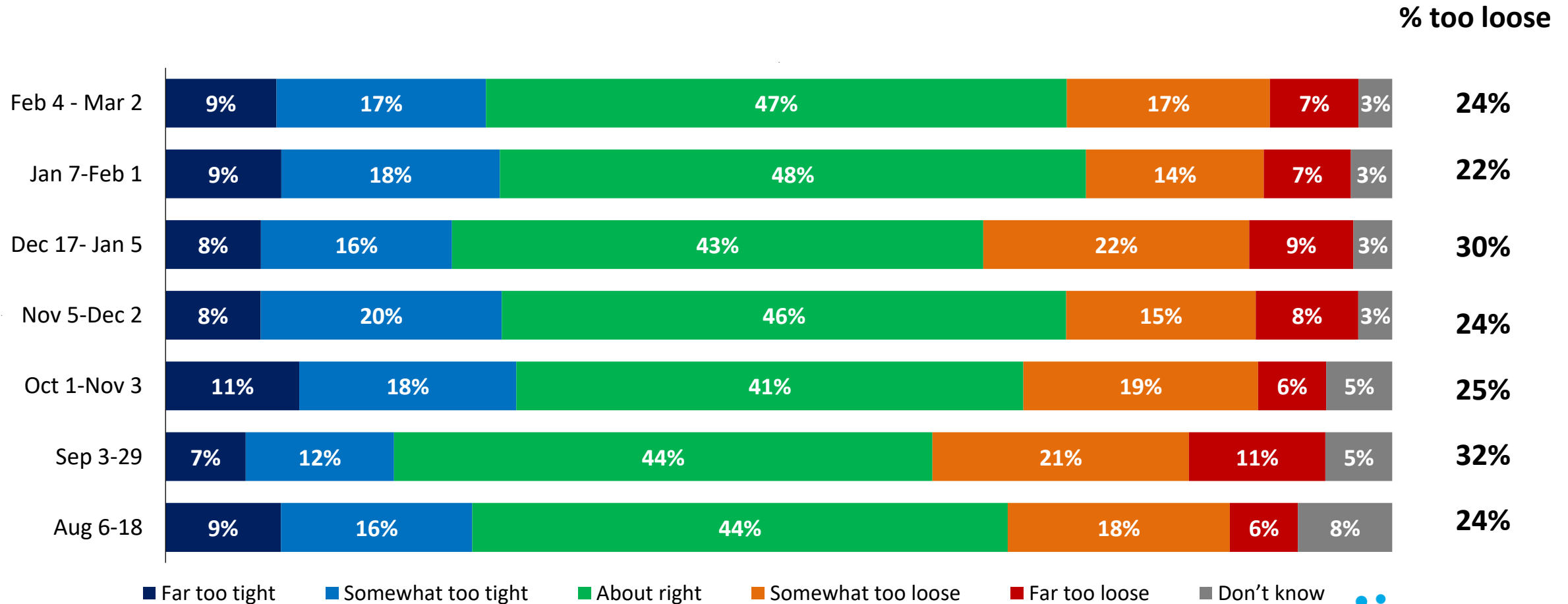


Provincial Restrictions - Quebec: Just like Alberta, those saying restrictions are 'too loose' is steady this month



Now, thinking about the restrictions the provincial government in [PROV] currently has in place to reduce social contacts and combat the spread of COVID-19, do you think the restrictions are too tight, too loose, or are they about right?

[asked of QC respondents; n=470]



Methodology



Survey Methodology

These are the results of an online survey conducted between February 4th and March 2nd, 2021.

Method: This online survey was conducted using INNOVATIVE's Canada 20/20 national research panel with additional respondents from Dynata, a leading provider of online sample. Each survey is administered to a series of randomly selected samples from the panel and weighted to ensure that the overall sample's composition reflects that of the actual Canadian population according to Census data to provide results that are intended to approximate a probability sample.

Sample Size: n=3,763 Canadian citizens, 18 years or older. The results are nationally weighted to n=2,000 based on Census data from Statistics Canada.

Field Dates: February 4th to March 2nd, 2021

Weighting: Results for Canada are weighted by age, gender, and region to ensure that the overall sample's composition reflects that of the actual population according to Census data; in order to provide results that are intended to approximate a probability sample. Weighted and unweighted frequencies are reported in the table.

Margin of Error: This is a representative sample. However, since the online survey was not a random probability based sample, a margin of error cannot be calculated. Statements about margins of sampling error or population estimates do not apply to most online panels.

Note: Graphs may not always total 100% due to rounding values rather than any error in data. Sums are added before rounding numbers.

	Unweighted (n)	Unweighted (%)	Weighted (n)	Weighted (%)
Men 18-34	342	9.1%	271	13.6%
Men 35-54	533	14.2%	334	16.7%
Men 55+	955	25.4%	364	18.2%
Women 18-34	469	12.5%	274	13.7%
Women 35-54	592	15.7%	347	17.3%
Women 55+	872	23.2%	411	20.5%
BC	1244	33.1%	269	13.4%
AB	359	9.5%	222	11.1%
Prairies	233	6.2%	131	6.6%
ON	971	25.8%	772	38.6%
QC	605	16.1%	470	23.5%
Atlantic	351	9.3%	135	6.8%

For more information, please contact:

Greg Lyle

President

(t) 416-642-6429

(e) glyle@innovativeresearch.ca

Building Understanding.

